

- ### KEY
- Robe Lighting Robin Esprite
 - Robe Lighting Robin T1 Profile
 - Ayrton Eurus 5
 - Martin MAC TW1
 - Impression X4 Bar 20 (20ch)
 - Martin MAC Aura XIP
 - ETC Source 4 Lustr 3 14°
 - ETC Source 4 Lustr 3 36°
 - ETC Source 4 Lustr 3 50°
 - ETC Source 4 Lustr 2 50°
 - ETC Source 4 Lustr 2 36°
 - ETC Source 4WRD Color II XDILT 26deg
 - ETC Source 4WRD Color II XDILT 50deg
 - Selecon HUI CYC 4
 - Selecon LUI Flood 1
 - ARRI True Blue Theater ST5
 - MDG ATMe
 - Scroller
 - Gantom 7
 - ETC Source 4 19deg

LEGEND

L = LEE FILTERS
R = ROSCO SUPERGEL

*F = R132 (1/4 HAMBURG FROST)
**F = R139 (1/8 HAMBURG FROST)
***F = R114 (HAMBURG FROST)

IRIS
Q1 = XXX XXXX xX
Q2 = XXX XXXX xX
Q3 = XXX XXXX xX

ALL GOBOS MUST BE A-SIZE

↑ INDICATES LAMP ORIENTATION (PAR ORY)

NOTES

1. STATED MEASUREMENTS TAKE PRECEDENCE OVER SCALED DRAWING
2. ALL MEASUREMENTS IN MM
3. ALL MEASUREMENTS ARE TO THE BARBOOM ARM AND NOT THE LAMP
4. BEARS ALL REQUIRED
5. PLEASE ADD ALL FROSTGOBOS PRIOR TO FOCUS



MILTON COURT THEATRE
JUNE 2026

DIRECTOR.....AMY LANE
DESIGNER.....ANNA YATES
LIGHTING DESIGNER.....TOBY ISON
CONDUCTOR.....JAMES HENSHAW
PRODUCTION MANAGER.....FINN IRVING
PRODUCTION ELECTRICIAN.....JAMES BROADHURST
LIGHTING PROGRAMMER.....IRIS FARGUHHARSON

ROBE T1

ESPRITE STATIC

ESPRITE ROTATE

EURUS ROTATE

EURUS STATIC

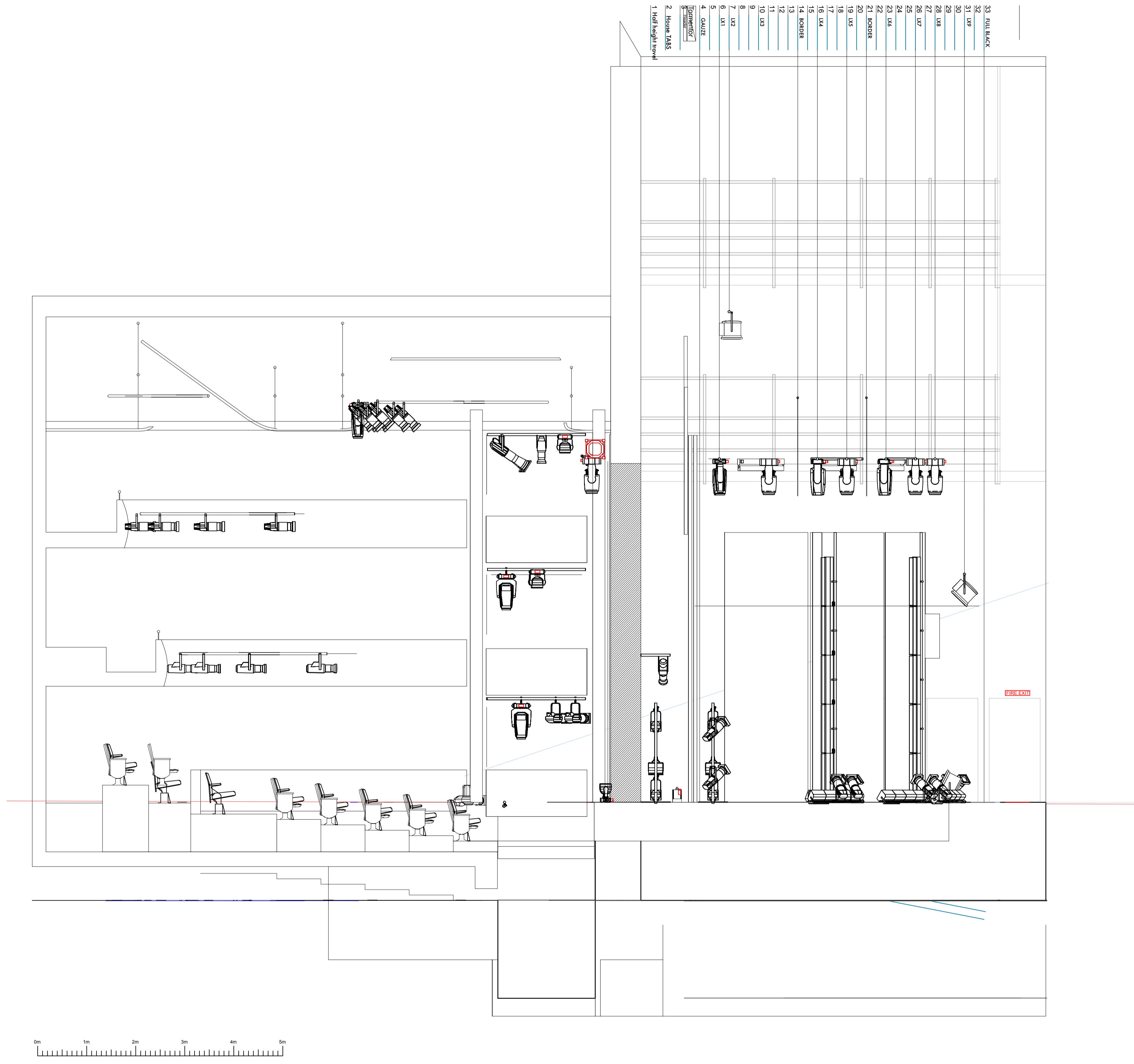
OVERHEAD

REVISION D

DATE: 01/05/26 DRAWN BY: TI

SCALE: 1:50 @ A1

REV	DATE	DETAILS
A	06/04/26	FIRST DRAFT
B	22/04/26	PAR LADDER
C	27/04/26	UPDATES + CHANNEL NO.
D	01/05/26	FINAL PRE PREP PLAN
E	XX/XX/XX	XXX
F	XX/XX/XX	XXX
G	XX/XX/XX	XXX



KEY

- Robe Lighting Robin Esprite
- Robe Lighting Robin T1 Prof il e
- Ayrton Eurus 5
- Martin MAC TW1
- Impression X4 Bar 20 (20ch)
- Martin MAC Aura XIP
- ETC Source 4 Lustr 3 14°
- ETC Source 4 Lustr 3 36°
- ETC Source 4 Lustr 3 50°
- ETC Source 4 Lustr 2 50°
- ETC Source 4 Lustr 2 36°
- ETC Source 4WRD Color II XDLT 26deg
- ETC Source 4WRD Color II XDLT 50deg
- Selecon HUI CYC 4
- Selecon LUI Flood 1
- ARRI True Blue Theater ST5
- MDG ATMe
- Scroller
- Gantom 7
- ETC Source 4 19deg

LEGEND

- L = LEE FILTERS
- R = ROSCO SUPERGEL
- *F = #132 (1/4 HAMBURG FROST)
- **F = #139 (HAMBURG FROST)
- ***F = #114 (HAMBURG FROST)
- IRIS
- G1 = XXX (XXX) xX
- G2 = XXX (XXX) xX
- G3 = XXX (XXX) xX
- ALL GOROS MUST BE A-SIZE
- ↑ INDICATES LAMP ORIENTATION (PAR ORY)

NOTES

- * STATED MEASUREMENTS TAKE PRECEDENCE OVER SCALED DRAWING
- * ALL MEASUREMENTS IN MM
- * ALL MEASUREMENTS ARE TO THE BARBOOM ARM AND NOT THE LAMP
- * HUBS AS REQUIRED
- * PLEASE ADD ALL FROST/GOROS PRIOR TO FOCUS



MILTON COURT THEATRE
JUNE 2026

DIRECTOR.....AMY LANE
DESIGNER.....ANNA YATES
LIGHTING DESIGNER.....TOBY ISON
CONDUCTOR.....JAMES HENSHAW
PRODUCTION MANAGER.....FINN IRVING
PRODUCTION ELECTRICIAN.....JAMES BROADHURST
LIGHTING PROGRAMMER.....IRIS FARGUJARSON

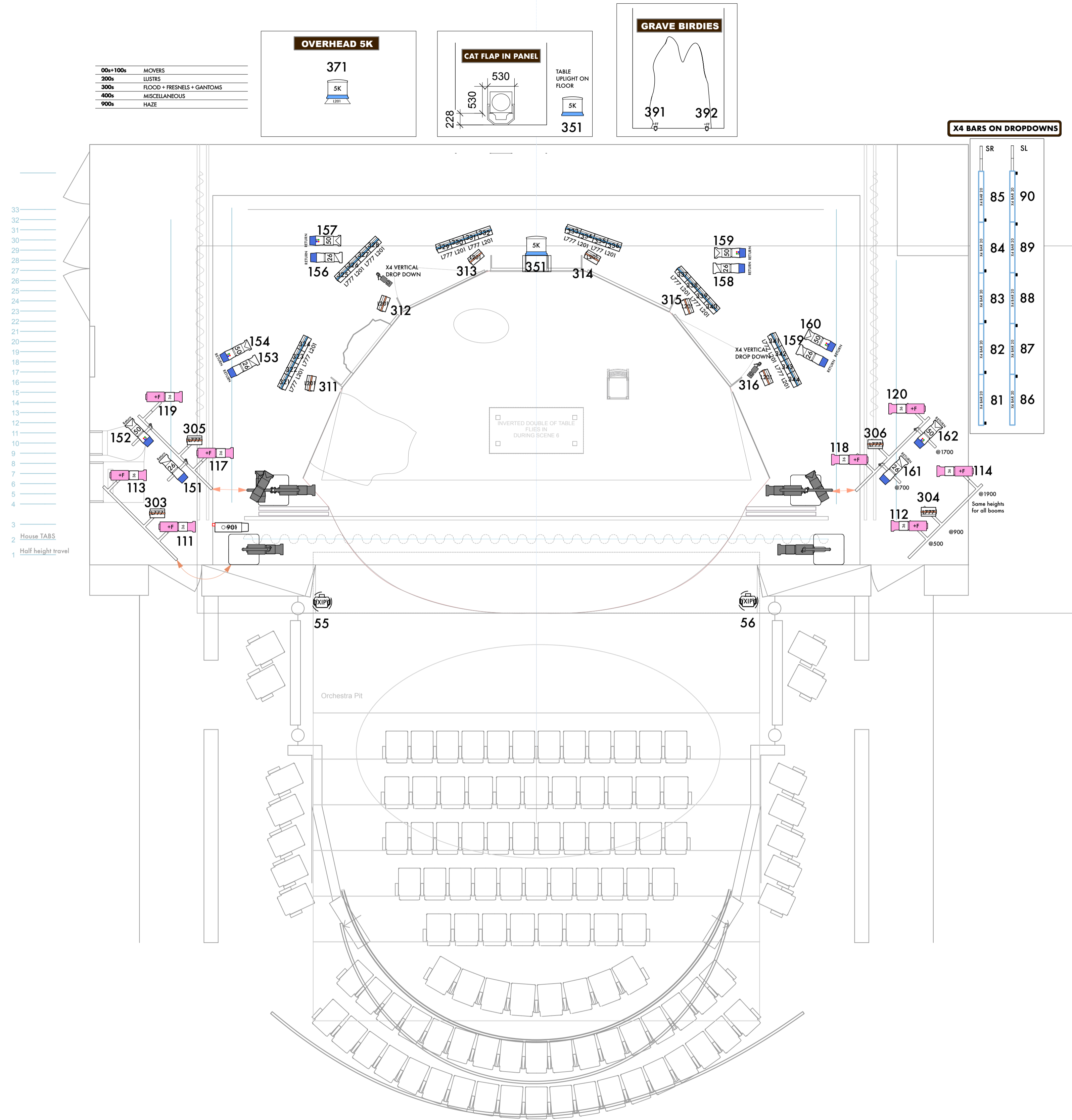
OVERHEAD

REVISION D

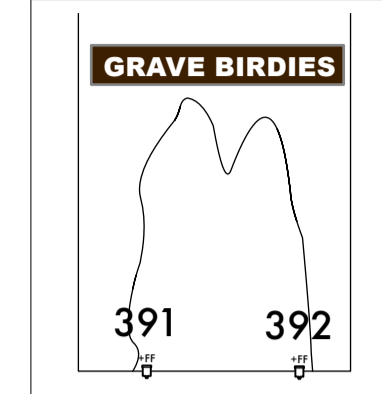
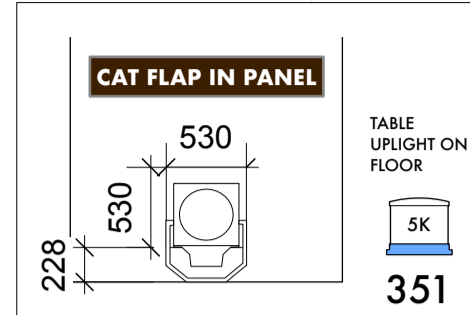
DATE: 01/05/26 DRAWN BY: TI

SCALE: 1:50 @ A1

REV	DATE	DETAILS
A	06/04/26	FIRST DRAFT
B	22/04/26	PAR LADDER
C	27/04/26	UPDATES + CHANNEL NO.
D	01/05/26	FINAL PRE PREP PLAN
E	XX/XX/XX	XXX
F	XX/XX/XX	XXX
G	XX/XX/XX	XXX



00+100+	MOVERS
200+	LUSTERS
300+	FLOODS + FRESNELS + GANTOMS
400+	MISCELLANEOUS
900+	HAZE



33
32
31
30
29
28
27
26
25
24
23
22
21
20
19
18
17
16
15
14
13
12
11
10
9
8
7
6
5
4
3
2 House TABS
1 Half height travel

SR
SL
85 90
84 89
83 88
82 87
81 86

KEY

- Robe Lighting Robin Esprite
- Robe Lighting Robin T1 Profile
- Ayrton Eurus 5
- Martin MAC TW1
- Impression X4 Bar 20 (20ch)
- Martin MAC Aura XIP
- ETC Source 4 Lustr 3 14"
- ETC Source 4 Lustr 3 36"
- ETC Source 4 Lustr 3 50"
- ETC Source 4 Lustr 2 36"
- ETC Source 4WRD Color II XDLT 26deg
- ETC Source 4WRD Color II XDLT 50deg
- Selecon HUI CYC 4
- Selecon LUI Flood 1
- ARRI True Blue Theater ST5
- MDG ATMe
- Scroller
- Gantom 7
- ETC Source 4 19deg

LEGEND

L = LEE FILTERS
R = ROSCO SUPERGEL

CHANNEL

IRIS

Q1 = XXX (XXX) xX
Q2 = XXX (XXX) xX
Q3 = XXX (XXX) xX

ALL GOROS MUST BE A-SIZE

↑ INDICATES LAMP ORIENTATION (PAR ORY)

NOTES

- STATED MEASUREMENTS TAKE PRECEDENCE OVER SCALED DRAWING
- ALL MEASUREMENTS IN MM
- ALL MEASUREMENTS ARE TO THE BAR/BOOM ARM AND NOT THE LAMP
- HUBS AS REQUIRED
- PLEASE ADD ALL FROST/GOROS PRIOR TO FOCUS



MILTON COURT THEATRE
JUNE 2026

DIRECTOR..... AMY LANE
DESIGNER..... ANNA YATES
LIGHTING DESIGNER..... TOBY ISON
CONDUCTOR..... JAMES HENSHAW
PRODUCTION MANAGER..... FINN IRVING
PRODUCTION ELECTRICIAN..... JAMES BROADHURST
LIGHTING PROGRAMMER..... IRIS FARGUJARSON

OVERHEAD

REVISION D

DATE: 01/05/26 DRAWN BY: TI

SCALE: 1:50 @ A1

REV	DATE	DETAILS
A	06/04/26	FIRST DRAFT
B	22/04/26	PAR LADDER
C	27/04/26	UPDATES + CHANNEL NO.
D	01/05/26	FINAL PRE PREP PLAN
E	XX/XX/XX	XXX
F	XX/XX/XX	XXX
G	XX/XX/XX	XXX